

Installation Instructions for Iridium Extreme USB Driver

Prior to using the data modem features of your Iridium Extreme handset described in the Iridium Extreme Data Services Manual, you must first install the VCOMPORT USB Driver located on your CD-ROM in the "Iridium Extreme Driver" section. If a prior Iridium VCOMPORT USB Driver is installed on the PC, this must be removed first. The new USB driver is compatible with: 32 and 64 bit versions of Windows beginning with XP® Service Pack 2, through Windows 7®. For updated information regarding compatibility with other Windows® operating systems, please contact your Iridium Service Provider. Note that in this installation manual, the 9575 model number for the Iridium Extreme is referenced per design.

D:\H3CD1101\H3CD1101\Iridium Extreme Drivers

Before beginning the installation, please make sure you have the following items:

Iridium Extreme Handset

Iridium Extreme Data CD

USB Cable (Standard to Mini connectors)

An available USB port on your computer (e.g., COM 3)

Administrator Privileges

For Macintosh OS X® 10.4 – 10.6: *(previous versions not supported)*

The user does not need to install USB drivers, the MAC OS will automatically configure the appropriate settings when the phone is attached and used for data service

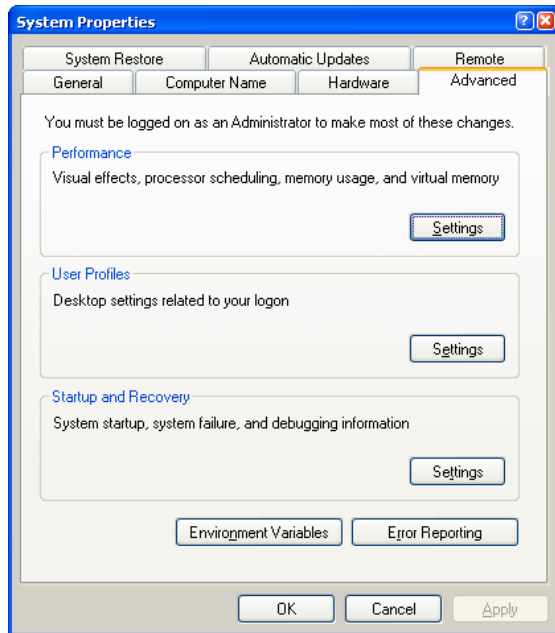
For Windows XP® 32 & 64 bit:

Prior using the Data Modem features of the Iridium Extreme handset the VCOMPORT USB Driver needs to be installed. All other prior installed driver needs to be uninstalled.

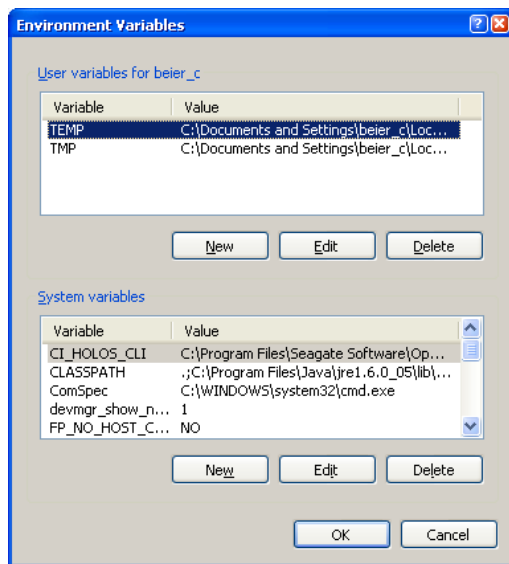
To remove previous versions of the driver:

- 1) Go to *Start* and right-click *My Computer* and select *Properties*.
- 2) Select the *Advanced* tab.

Installation Instructions for Iridium Extreme USB Driver

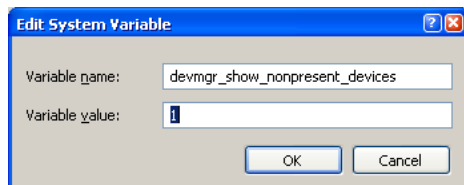


3) Click the *Environmental Variables* button



4) Under *System Variables*, click the *New* button.

5) Enter the following information:



6) Click the *Hardware* tab.

7) Click the *Device Manager* button.

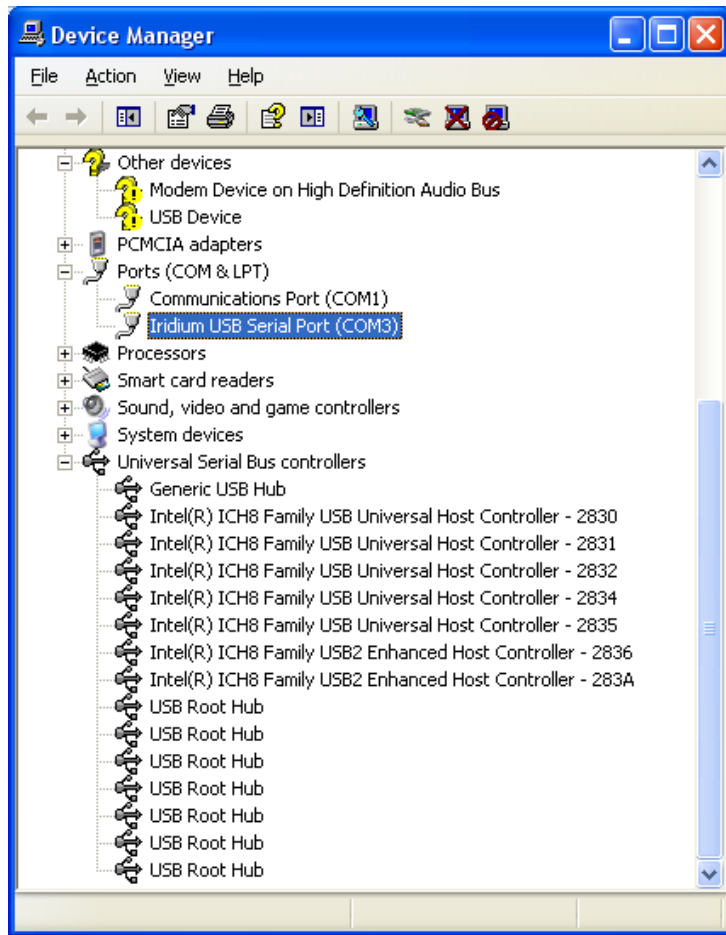
8) Select view and then *Show Hidden Devices*

9) Click on the + to expand the *Other devices* entry.

10) Right-click on any entries you see which say Iridium and click *Uninstall*.

Installation Instructions for Iridium Extreme USB Driver

- 11) Click on the + to expand the *Ports (COM & LPT)* entry.
- 12) Right-click on any entries you see which say Iridium and click *Uninstall*.



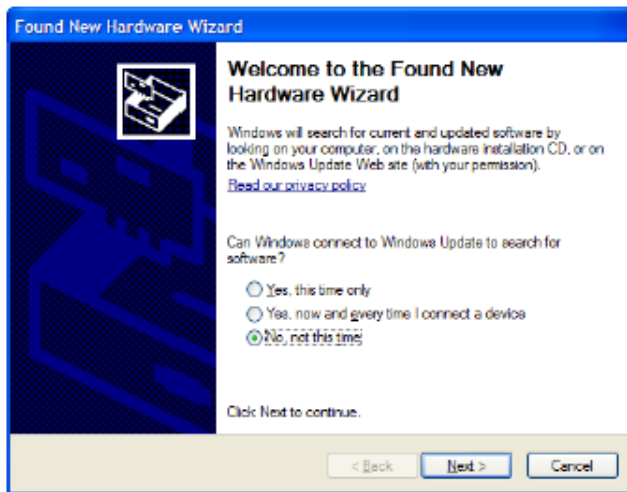
- 13) You should see all the previously installed Iridium handset drivers
- 14) Click on the + to expand the *USB* entry.
- 15) Right-click on any entries you see which say Iridium and click *Uninstall*.
- 16) Reboot your computer.

USB Driver Installation

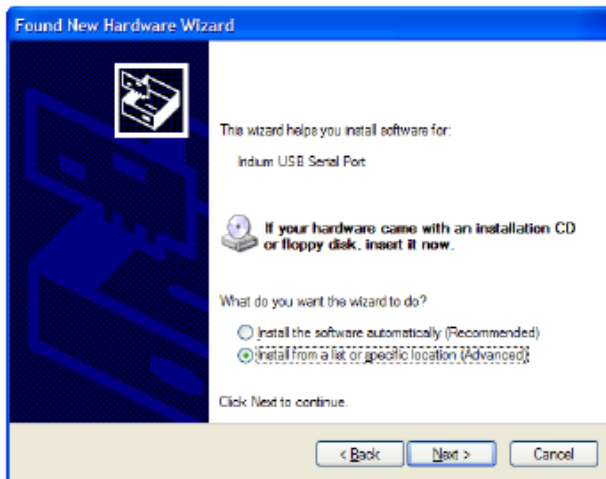
Please note that the zip file should be expanded prior to copying to target PC.

- 1) Ensure the PC is turned on and that a USB port is accessible
- 2) From the Iridium Extreme Data CD, copy the VCOMPORT folder to the c:\ directory
- 3) Turn on the Iridium Extreme Handset
- 4) Connect the Mini USB Connector to the Handset
- 5) Connect the Standard USB Connector to the PC
- 6) At this time your PC should initialize the *Found New Hardware Wizard*
- 7) At the Welcome screen, select the radio button next to *No, not at this time* and click *Next*

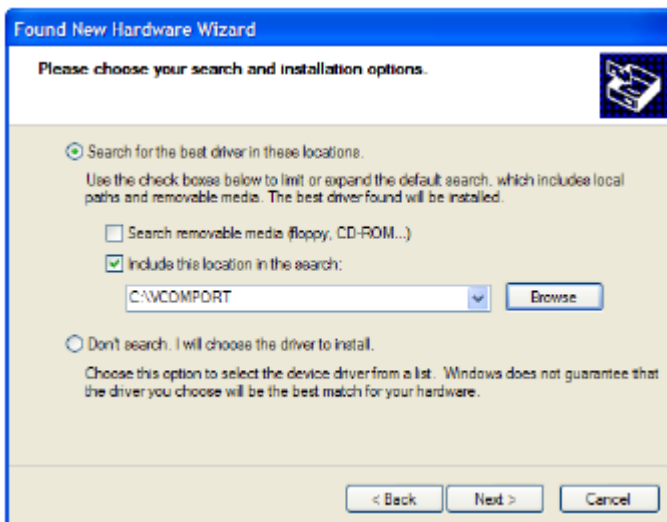
Installation Instructions for Iridium Extreme USB Driver



- 8) At the next screen select *Install from a list of specific location (Advanced)* and click *Next*



- 9) At the next screen; click the radio button *Search for the best driver in these locations*
10) Next check the box next to *include this location in the search* and click the *Browse* button
11) Browse and select the location of the VCOMPORT folder



- 12) Click *Next*

Installation Instructions for Iridium Extreme USB Driver

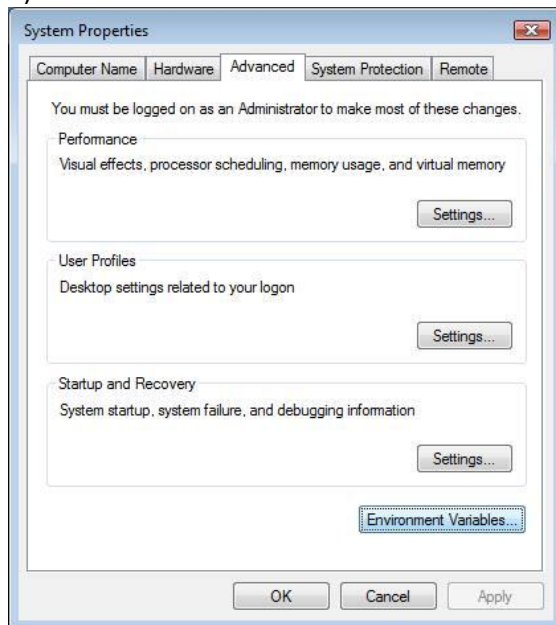
- 13) The wizard should then install software for the Iridium USB Serial Port
- 14) You may get a warning that this driver has not passed Windows logo® testing, select *Continue Anyway*.
- 15) Once the installation has completed, you will receive a message that the process has completed – click *Finish* to exit.
- 16) Go to the *Start* menu and right click on *My Computer* and select *Properties*.
- 17) Click the *Hardware* tab, and click the *Device Manager* button.
- 18) Click on the + to expand the *Ports (COM & LPT)* entry.
- 19) Note which Com Port Number is associated with the Iridium USB Serial Port.

For Windows Vista® 32 & 64 bit:

During any of the following steps you may be required several times to approve access by Windows UAC (User Account Control). When prompted, choose Continue.

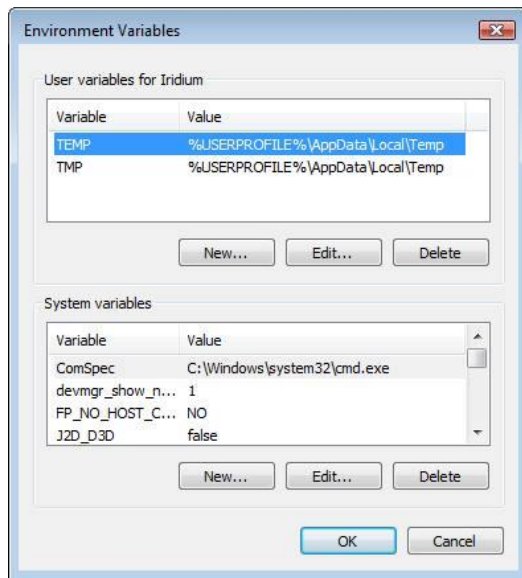
To remove previous versions of the driver:

- 1) Go to *Start* and right-click *Computer* and select *Properties*.
- 2) Select the *Advanced* tab.

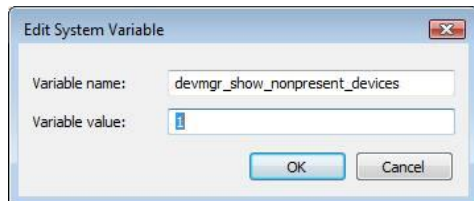


- 3) Click the *Environmental Variables* button

Installation Instructions for Iridium Extreme USB Driver

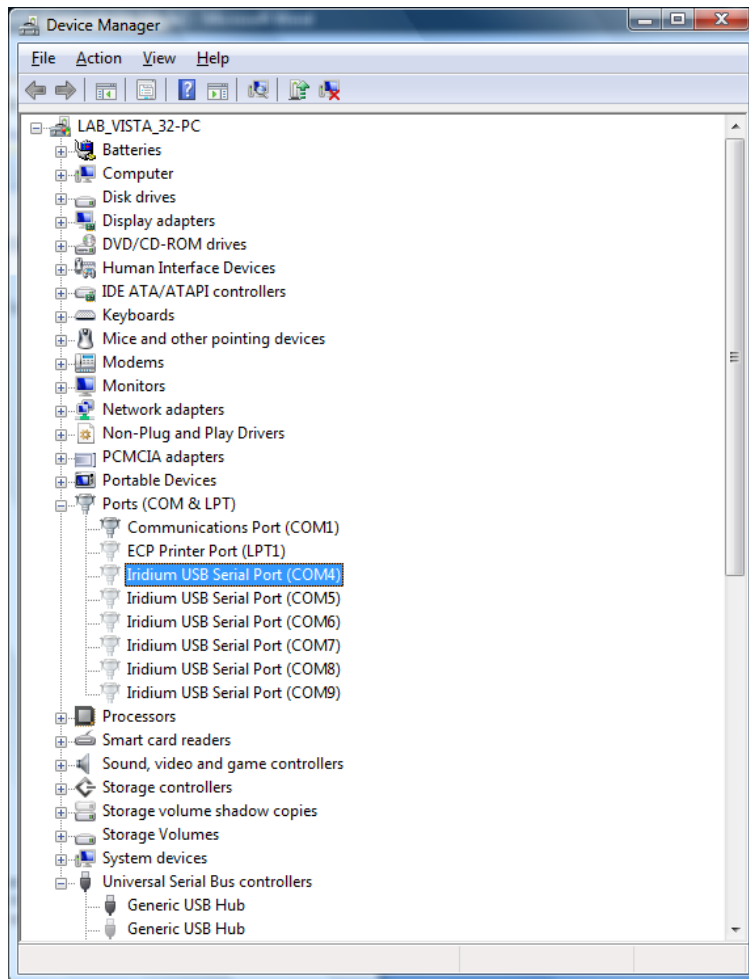


- 4) Under *System Variables*, click the *New* button.
- 5) Enter the following information:



- 6) Click the *Hardware* tab.
- 7) Click the *Device Manager* button.
- 8) Select view and then *Show Hidden Devices*
- 9) Click on the + to expand the *Other devices* entry.
- 10) Right-click on any entries you see which say Iridium and click *Uninstall*.
- 11) Click on the + to expand the *Other devices* entry.
- 12) Right-click on any entries you see which say Iridium and click *Uninstall*.

Installation Instructions for Iridium Extreme USB Driver



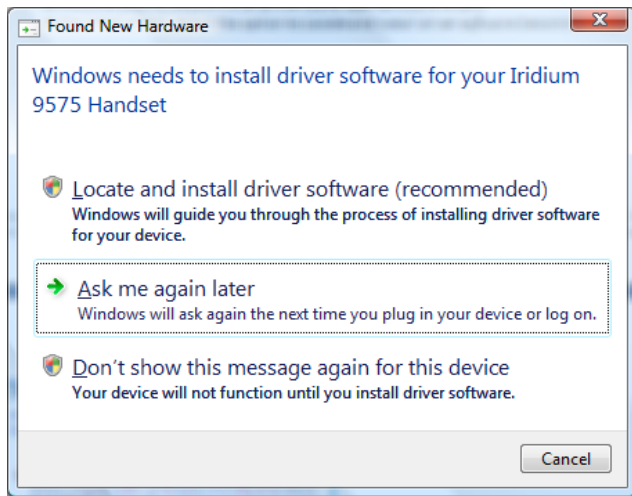
- 13) You should see all the previously installed Iridium handset drivers
- 14) Click on the + to expand the *Universal Serial Bus controllers'* entry.
- 15) Right-click on any entries you see which say Iridium and click *Uninstall*.
- 16) Reboot your computer.

USB Driver Installation

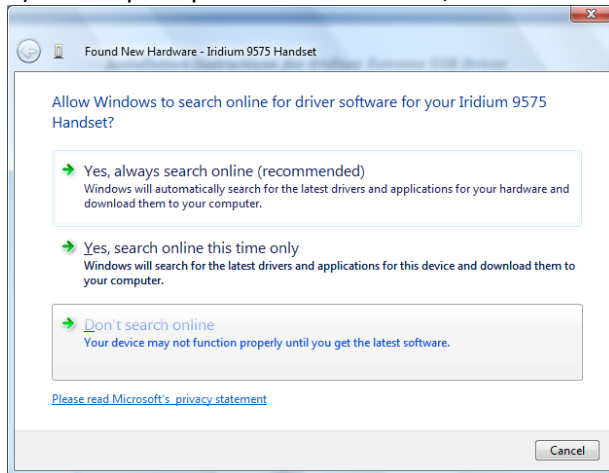
Please note that the zip file should be expanded prior to copying to target PC.

- 1) Ensure the PC is turned on and that a USB port is accessible
- 2) From the Iridium Extreme Data CD, copy the VCOMPORT folder to the c:\ directory
- 3) Turn on the Iridium Extreme Handset
- 4) Connect the Mini USB Connector to the Handset
- 5) Connect the Standard USB Connector to the PC
- 6) At this time your PC should initialize the *Found New Hardware Wizard*
- 7) At the initial screen, select the option to *Locate and install driver software (recommended)*

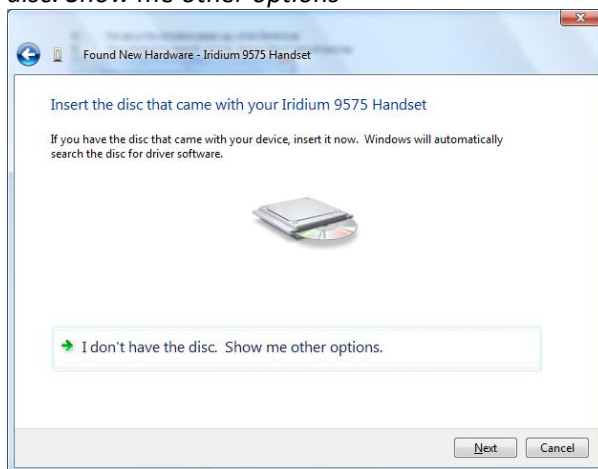
Installation Instructions for Iridium Extreme USB Driver



- 8) If a security window pops up, click *Continue*
- 9) If prompted to search online, select *Don't search online*

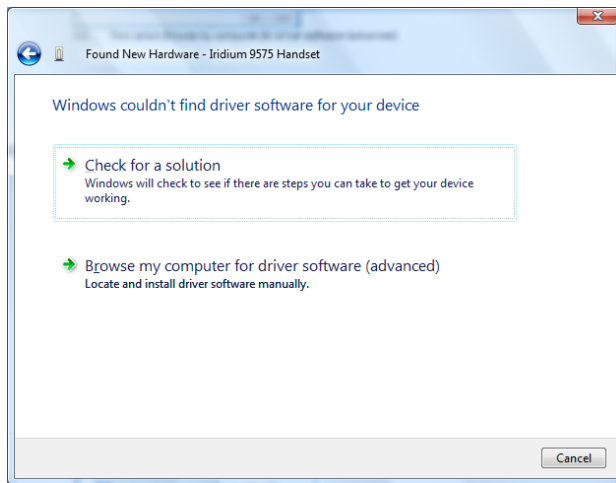


- 10) When prompted to insert the disc that came with your Iridium Extreme Handset, select *I don't have the disc. Show me other options*

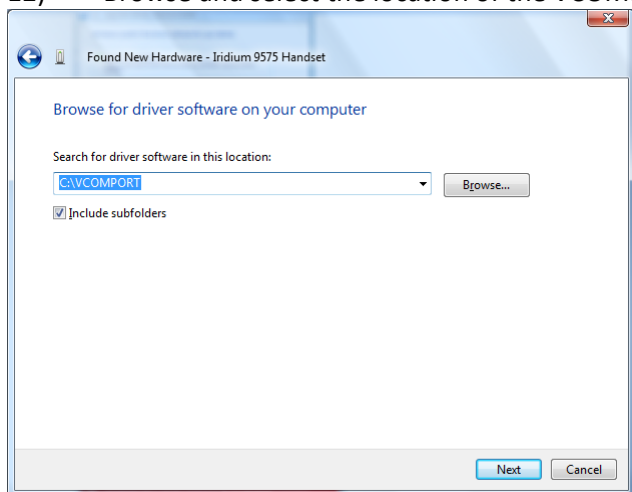


- 11) Then select *Browse my computer for driver software (advanced)*

Installation Instructions for Iridium Extreme USB Driver

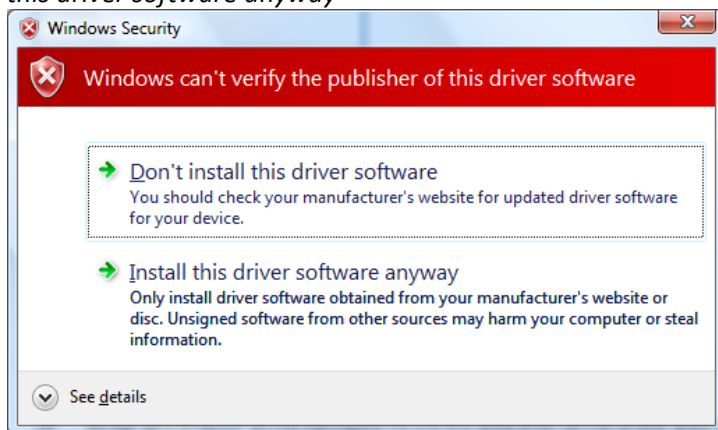


- 12) Browse and select the location of the VCOMPORT folder



- 13) Click *Next*

- 14) You may get a Windows® security warning that the publisher of the driver can't be verified, select *Install this driver software anyway*



- 15) Once the installation has completed, you will receive a message that the process has completed – click *Finish* to exit.
- 16) Go to the 'Start' menu and right click on "Computer" and select 'Properties'.
- 17) Click the Hardware tab, and click the "Device Manager" link.

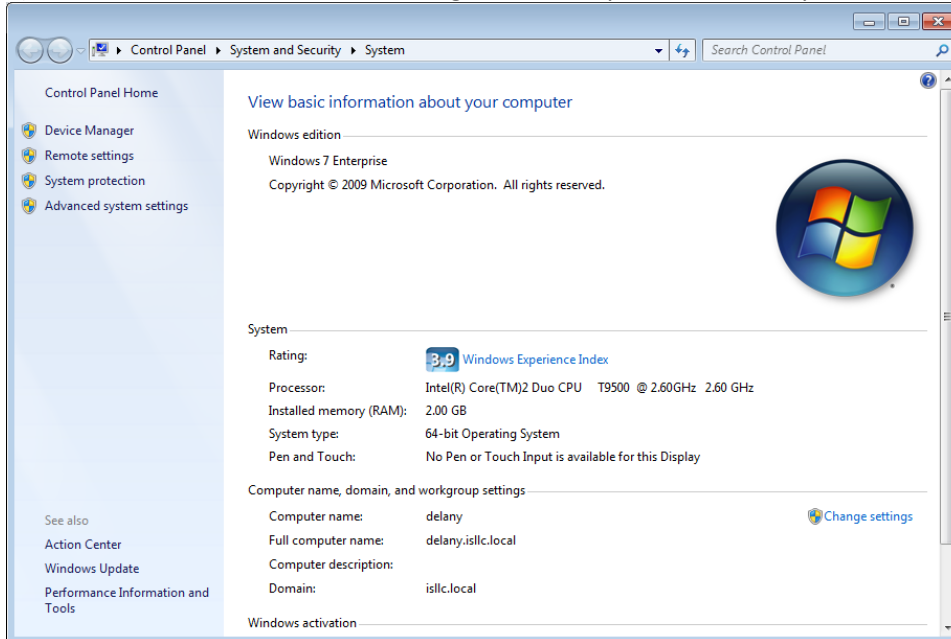
Installation Instructions for Iridium Extreme USB Driver

- 18) Click on the '+' to expand the "Ports (COM & LPT)" entry.
- 19) Note which Com Port Number is associated with the Iridium USB Serial Port

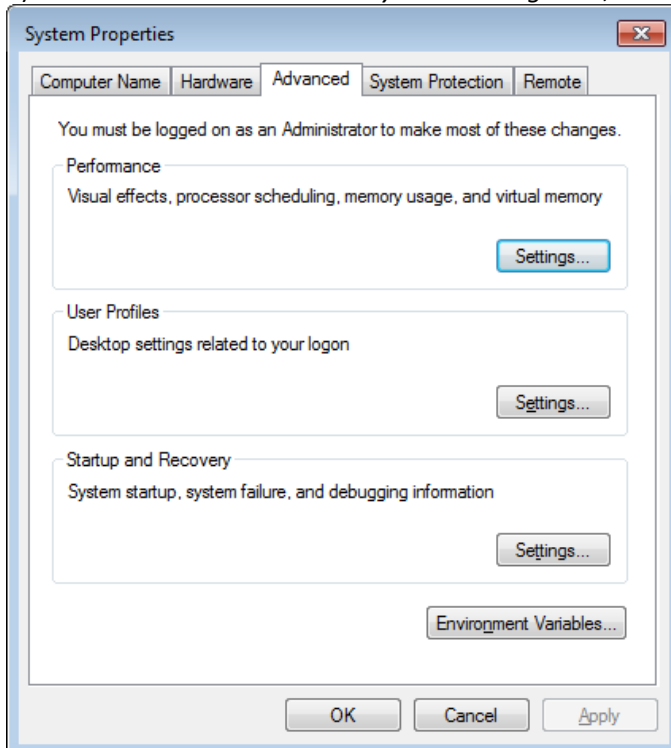
For Windows 7® 32 & 64 bit:

To remove previous versions of the driver:

- 1) Click the Windows *Perl* and right-click *Computer*, select *Properties*, and the *Contol Panel* window opens.

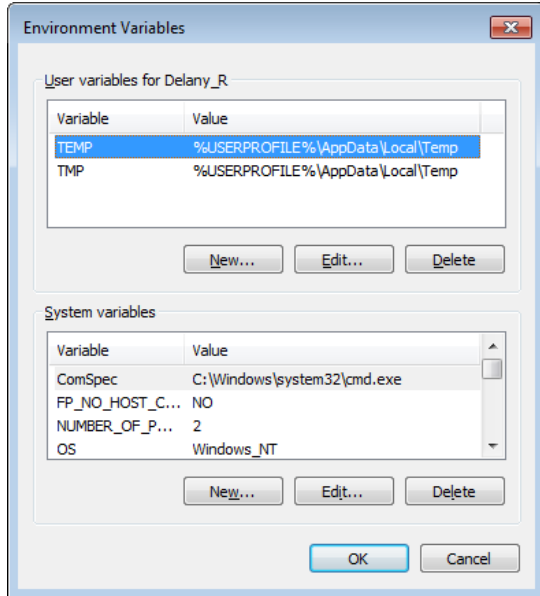


- 2) Click on the *Advanced system settings* link, and *System Properties* opens.



Installation Instructions for Iridium Extreme USB Driver

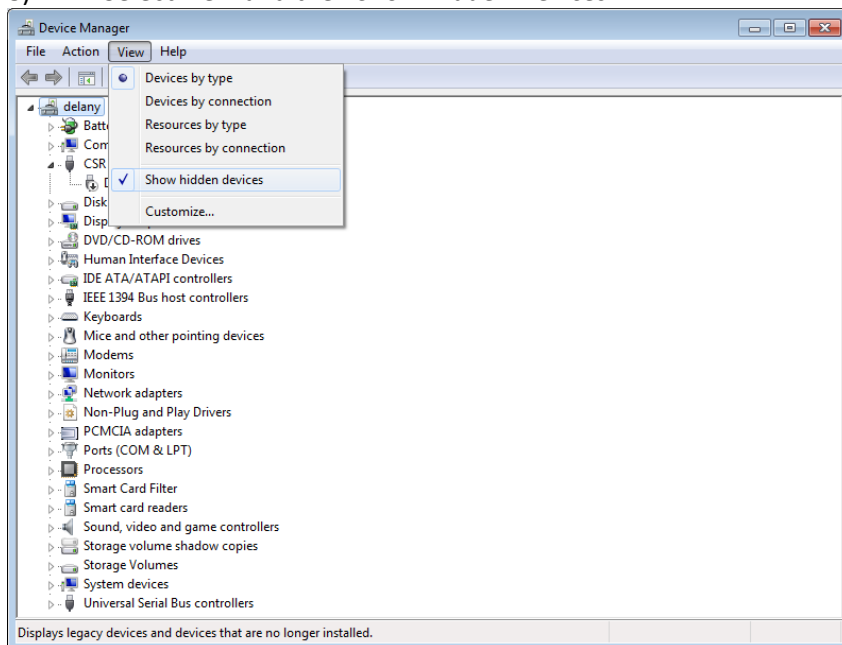
- 3) Click on the *Environment Variables...* button and *Environment Variables* opens.



- 4) Under *System Variables*, click the *New* button.
5) Enter the following information:



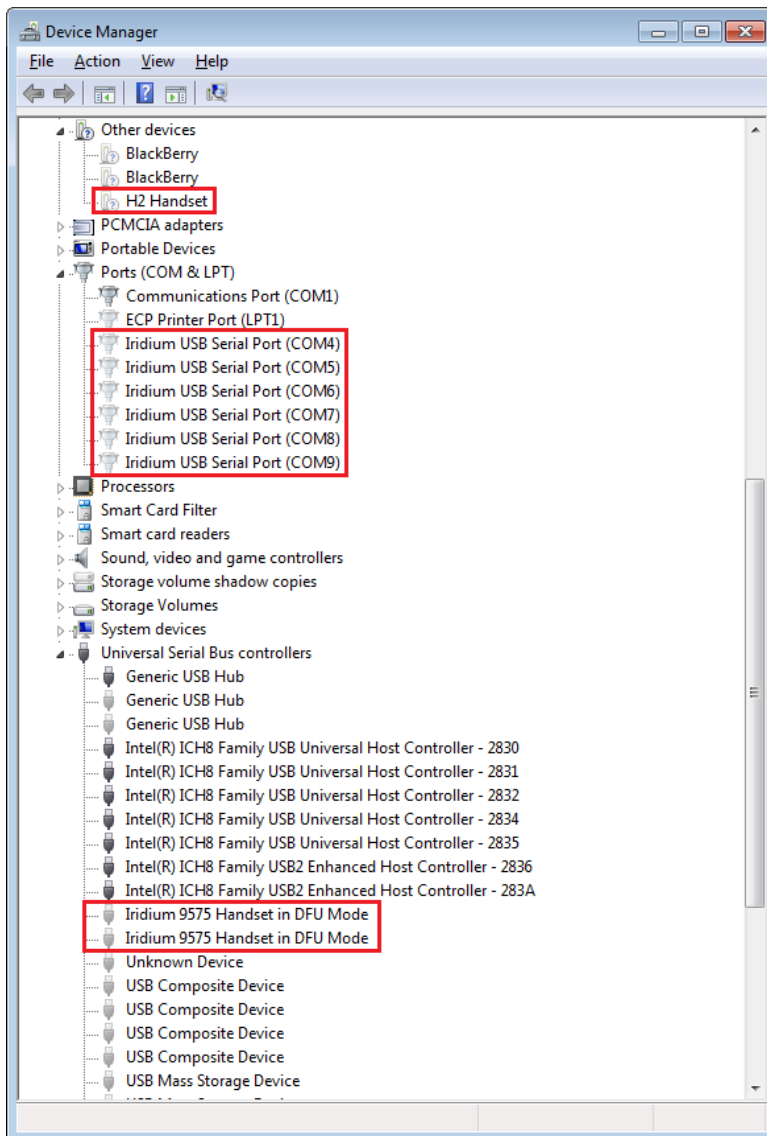
- 6) Return to the *Control Panel* window displaying *Computer Properties*.
7) Click on the *Device Manager* link, and the *Device Manager* window opens.
8) Select view and then *Show Hidden Devices*



- 9) Expand the *Other devices* entry.

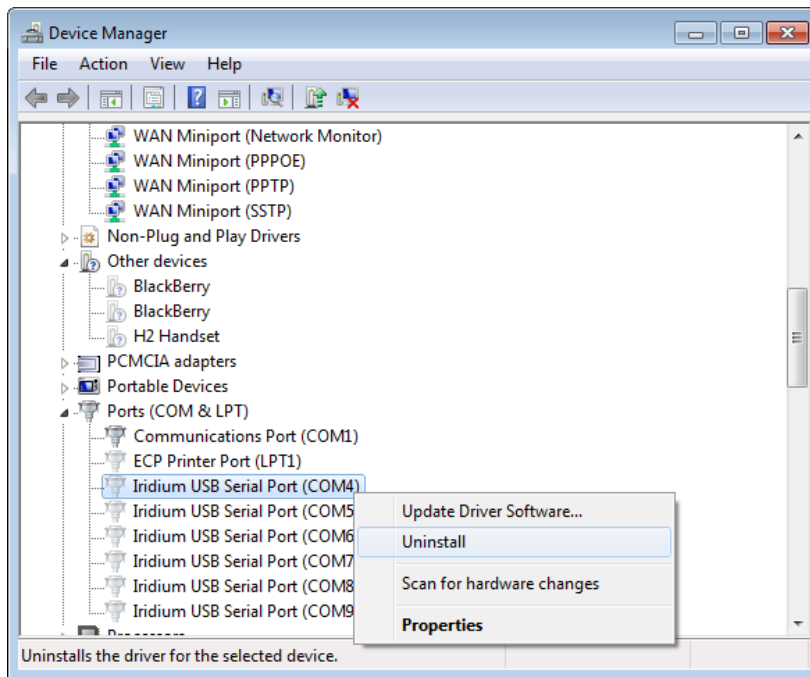
Installation Instructions for Iridium Extreme USB Driver

- 10) Expand the *Ports (COM & LPT)* entry.
- 11) Expand the *Universal Serial Bus controllers*' entry.
- 12) You should see all the previously installed Iridium handset drivers



- 13) Right-click on any entries you see which say Iridium and click *Uninstall*.

Installation Instructions for Iridium Extreme USB Driver



- 14) Check the *Delete the driver software for this device* checkbox and click *OK*.



- 15) Right-click on any entries you see which say Iridium and click *Uninstall*.
- 16) Reboot your computer.

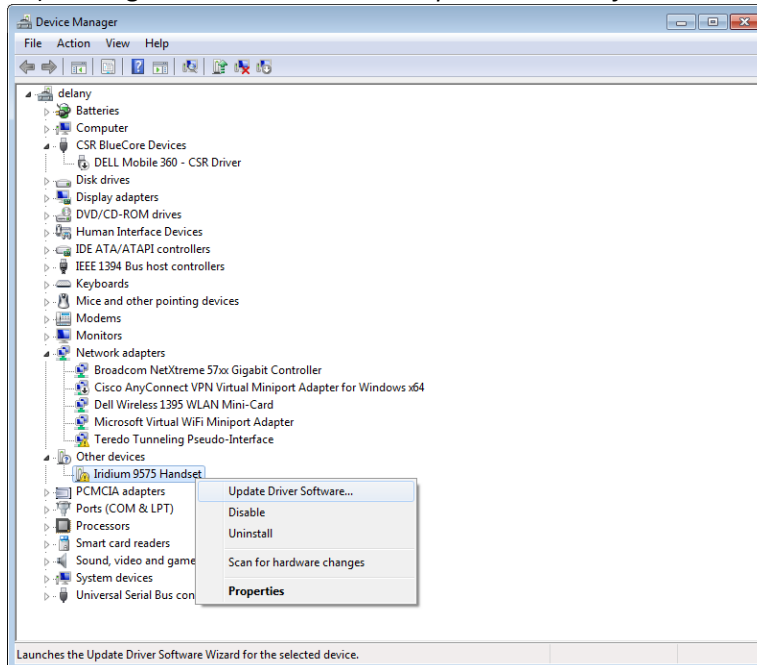
USB Driver Installation

Please note that the zip file should be expanded prior to copying to target PC.

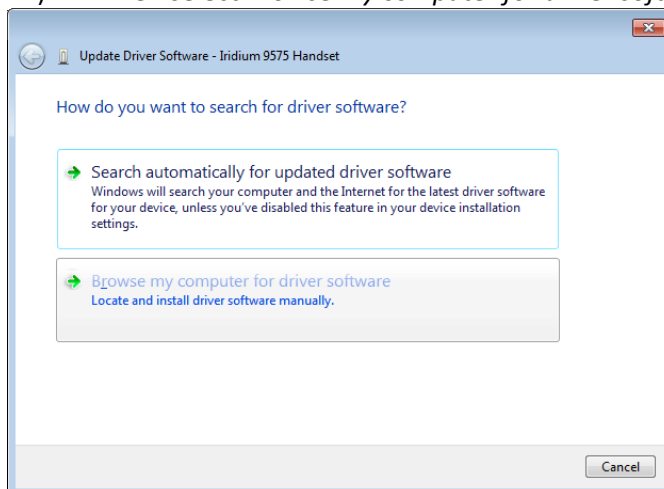
- 1) Ensure the PC is turned on and that a USB port is accessible
- 2) From the Iridium Extreme Data CD, copy the VCOMPORT folder to the c:\ directory
- 3) Turn on the Iridium Extreme Handset
- 4) Connect the Mini USB Connector to the Handset
- 5) Connect the Standard USB Connector to the PC
- 6) Click on the Windows 'Perl'
- 7) Right click on *Computer* and select *Properties*
- 8) Click on the *Device Manager* link near the top left of the window
- 9) Locate the *Iridium 9575 Handset* icon, it will probably be under *Other devices*

Installation Instructions for Iridium Extreme USB Driver

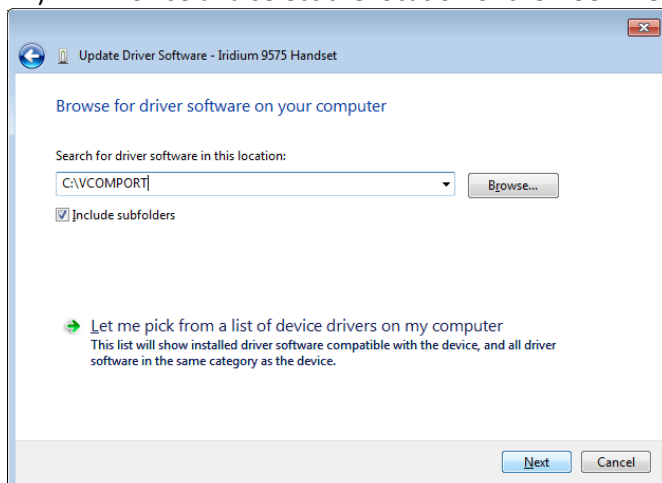
10) Right click on it and select *Update driver software*



11) Then select *Browse my computer for driver software (advanced)*



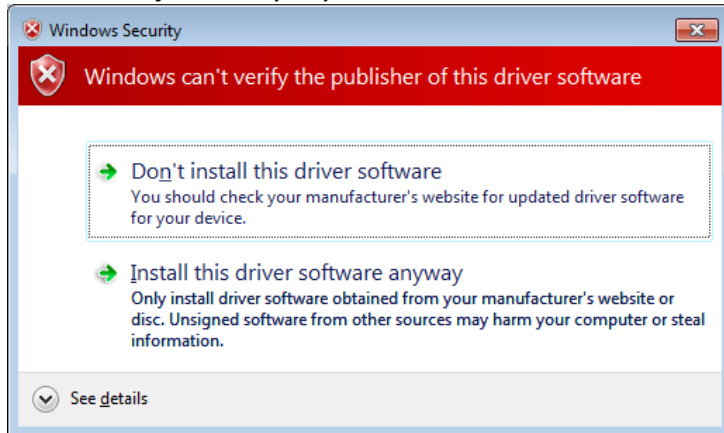
12) Browse and select the location of the VCOMPORT folder



13) Click *Next*

Installation Instructions for Iridium Extreme USB Driver

14) You may get a Windows® security warning that the publisher of the driver can't be verified, select *Install this driver software anyway*



15) Once the installation has completed, you will receive a message that the process has completed – click *Finish* to exit.